

*The*  
GRAND  
AMERICA  
*Hotel*



# Meetings *at The* Grand

MEETING PLANNER GUIDE

---

## HEART OF THE WEST

NESTLED BETWEEN TWO SPECTACULAR RANGES OF THE ROCKY MOUNTAINS, SALT LAKE CITY IS THE PLACE FOR ADVENTURE TRAVEL, WINTER SPORTS AND SCENIC DRIVES. THOSE WHO TRAVEL TO UTAH MARVEL AT ITS MAGNIFICENT MOUNTAINS AND COLORFUL LANDSCAPES. SPORTING EXCURSIONS, CORPORATE RETREATS, SKI TRIPS, BIKING TOURS AND OTHER OUTDOOR RECREATION MAKE SALT LAKE CITY THE PERFECT YEAR-ROUND LOCATION FOR MEETINGS AND CONVENTIONS.



*Make every meeting truly Grand*

*The*  
**GRAND  
AMERICA**  
*Hotel*

555 SOUTH MAIN STREET | SALT LAKE CITY UT 84111  
800.533.3525 | WWW.GRANDAMERICA.COM

### Arts, Entertainment & Nightlife

The 2002 Olympic Winter Games focused world attention on the city's culture, arts, and attractions. While it was the snow and mountains that brought Olympic attendees to Salt Lake City, it was the nightlife that made them glad they came. World-class dining, numerous bars and nightclubs, theatres, dance companies, street fairs, music festivals and sporting events make Salt Lake City an exciting meeting choice.

### Accessibility

If you prefer rail travel, Amtrak trains arrive daily and the city's light rail service offers transportation from the Salt Lake International airport. The Grand America is located in the heart of the city within the public transit "free fare zone." Guests can travel throughout downtown on TRAX Light Rail or city bus without charge. Taxis and limousines are readily available from the concierge.

### Driving Directions

#### From Salt Lake International Airport

1. Take the Airport Road to I-80 East.
2. Travel I-80 toward downtown.
3. Exit at 600 South. At Main Street turn left.
4. The Grand America Hotel is on your right.

#### From North On I-15

1. Exit I-15 at 400 South exit.
2. Continue on 400 South, approximately one mile.
3. Turn right on Main Street (Street with TRAX Light Rail)
4. The Grand America Hotel is on your left.

#### From South On I-15

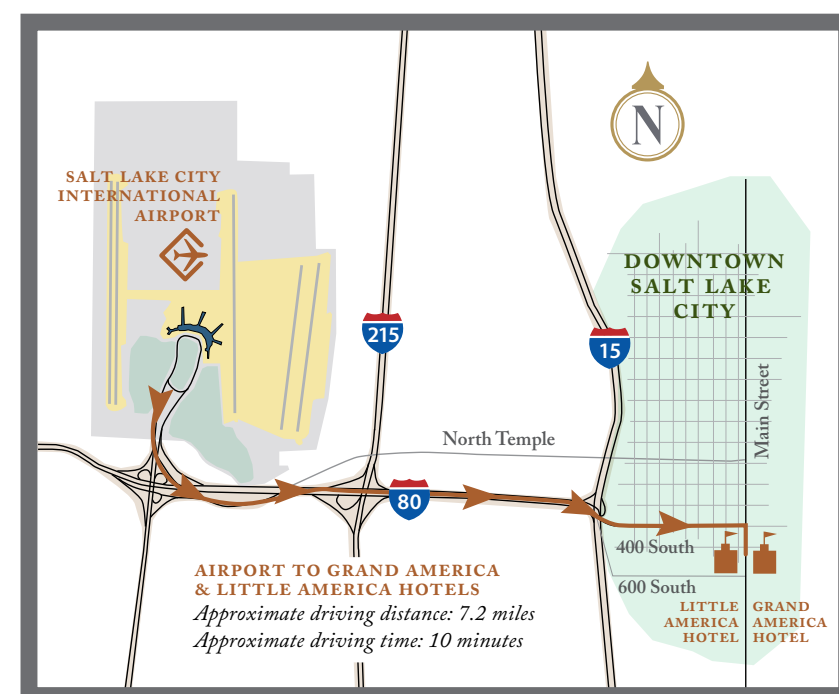
1. Exit I-15 at 600 South/City Center exit.
2. Continue on 600 South, approximately one mile.
3. Turn left on Main Street (Street with TRAX Light Rail)

#### From East On I-15

1. Take the I-15 North exit at the I-15 and I-80 exchange.
2. Exit I-15 at 600 South/City Center exit.
3. Continue on 600 South, approximately one mile.
4. Turn left on Main Street (Street with TRAX Light Rail)

#### From West On I-80

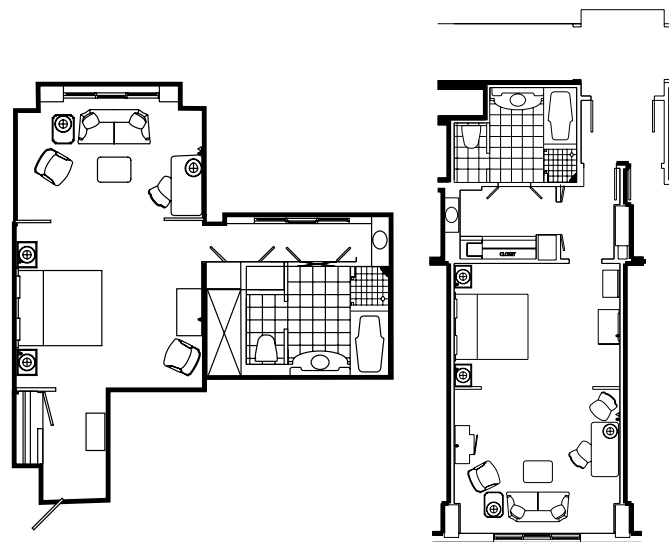
1. Exit I-15 at 600 South/City Center exit.
2. Continue on 600 South, approximately one mile.
3. Turn left on Main Street (Street with TRAX Light Rail)





## Premier Rooms

Conveniently divided into a sitting area and a bedroom, these incredibly spacious rooms offer amenities as breathtaking as their balcony mountain views. Retreat to the comfort of elegant Richelieu furniture in the sitting area, or melt into the down pillows and comforter on your king or queen-size bed. Other amenities include an Italian marble bath, separate glass shower, second bedroom vanity and basin and hand-stitched English wool carpeting.



Premier Floor Plan II

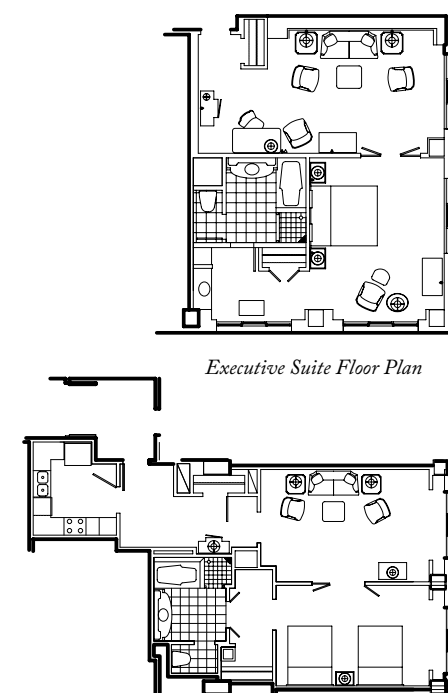
Premier Floor Plan I

### Premier Room Amenities

- 700 sq. ft
- Handcrafted cherry wood Richelieu furniture
- Separate shower, deep soaking tub, and separate water closet
- iHome stereo MP3 clock radio
- Roomy, leather-top desk
- Complimentary in-room wireless or high-speed internet access
- Flat-screen televisions with HD content
- Complimentary personal safe
- Three telephones, two separate lines
- Ironing amenities
- Plush bath robes and slippers
- Fully stocked mini refreshment bar

## Executive Suites

Elegant French doors separate the bedroom from the living area in these astonishingly spacious suites. Work at a luxurious leather-top desk via high-speed internet access or relax on plush in-room furniture. Begin and end each day in an elegant Italian marble bathroom, complete with a separate tub and shower. Suites are also available with a full kitchen.



Executive Suite Floor Plan

Executive Suite with Kitchen Floor Plan

### Executive Suite Amenities

- 880 sq. ft
- Step-out balconies
- Separate seating area
- Handcrafted cherry wood Richelieu furniture
- Additional vanity and basin
- Separate shower, deep soaking tub, and separate water closet
- iHome stereo MP3 clock radio
- Overstuffed couch and chair
- Roomy, leather-top desk
- Complimentary in-room wireless or high-speed internet access
- Flat-screen televisions with HD content
- Complimentary personal safe
- Three telephones, two separate lines
- Ironing amenities
- Plush bath robes and slippers
- Fully stocked mini refreshment bar

# AMENITIES & GUEST SERVICES

At The Grand America Hotel, we pride ourselves on the character and competence of our service staff. That is why we offer a wealth of guest services all designed to ensure your stay is Grand.

## Amenities & Guest Services

- Complimentary in-room high-speed internet
- 24-hour in-room dining
- Twice-daily housekeeping service
- Evening turndown service
- Complimentary personal safe
- Ironing amenities
- Hairdryer
- Private bar
- Complimentary safe deposit boxes
- Outdoor swimming pool in a garden setting
- Children's pool and whirlpool
- Complimentary overnight shoeshine
- Complimentary morning newspaper
- Non-allergenic pillows available
- Overnight laundry / dry cleaning service
- One-hour pressing service
- Valet parking service
- Business Center (includes fax, postage, photo copying)
- 1,200 covered parking spaces
- In-hotel shopping
- Valet service
- State-of-the-art fitness center
- Babysitting (with prior notification)
- Indoor heated pool
- Spa and Salon
- Luggage, ski and golf storage
- Concierge service
- Afternoon tea
- Outdoor pool and grill (seasonal)



HOTEL OVERVIEW

## GRAND PARLOR

Offering the perfect space for entertaining or welcoming your guests, the Grand Parlor connects to the Governor's Suite, providing a private escape for your VIP group.

### Grand Parlor Amenities

- Accommodates receptions for up to 40 guests
- Breathtaking mountain views
- Comfortable reception style seating
- Fireplace
- Private beverage bar available
- Butler kitchen with separate entrance
- High-speed wired and wireless internet access
- Media hub for MP3 players, cameras, DVD players, and game consoles
- 65" Digital LCD flat-screen television
- Guest powder room

## GARDEN COURTYARD

Nestled at the heart of the hotel property, the Center Courtyard features 35,000 square feet of lavish gardens with classically inspired water fountains and bronze sculptures. This courtyard creates a unique setting for daytime or evening events.



# Meetings *at The* Grand



## FIRST FLOOR

## FIRST FLOOR BALLROOMS & SALONS

ROOM	DIMENSIONS	SQ. FEET	HEIGHT	BANQUET	THEATER	CLASSROOM	RECEPTION
Grand Ballroom	113.5 x 201	22,803	20'	2420	2640	1848	3000
Ballroom A	57 x 66.5	3791	20'	350	350	252	425
Ballroom B	113.5 x 67.5	7657	20'	700	720	588	850
Ballroom C	113.5 x 66.5	7563	20'	700	720	588	850
Ballroom D	56.5 x 66.5	3763	20'	350	350	252	425
Reception A, B, C	175.75 x 33.5	5887	N/A	N/A	N/A	N/A	N/A
Imperial Ballroom	83 x 154	12,768	18'	1200	1425	900	1500
Imperial Ballroom A	83 x 50.5	4198	18'	400	418	300	450
Imperial Ballroom B	83 x 52	4302	18'	400	418	300	450
Imperial Ballroom C	42 x 51.5	2151	18'	200	200	144	225
Imperial Ballroom D	41.5 x 51.5	2130	18'	200	200	144	225
Imperial Reception A, B, C	135 x 20	2700	N/A	N/A	N/A	N/A	N/A
Grand Salon	58.5 x 58.5	3422	24'	360	377	244	400
Grand Salon Reception	40.5 x 28.5	1159	18'	N/A	N/A	N/A	N/A
Grand Salon Patio	54 x 54	2430	N/A	N/A	N/A	N/A	N/A
Savoy	62 x 34.25	2124	12.5'	180	186	160	220
Envoy	47 x 35.5	1669	12.5'	120	144	104	180
Savoy & Envoy Reception	47.5 x 12.25	584	12.5'	N/A	N/A	N/A	N/A
Murano Garden Salon	41.25 x 37.5	1760	19'	160	152	112	200
Venezia Garden Salon	41.25 x 36.5	1760	19'	160	152	112	200
Garden Courtyard	200' x 175'	35,000	N/A	N/A	N/A	N/A	1500

# Meetings *at The* Grand

LEGEND

DINING

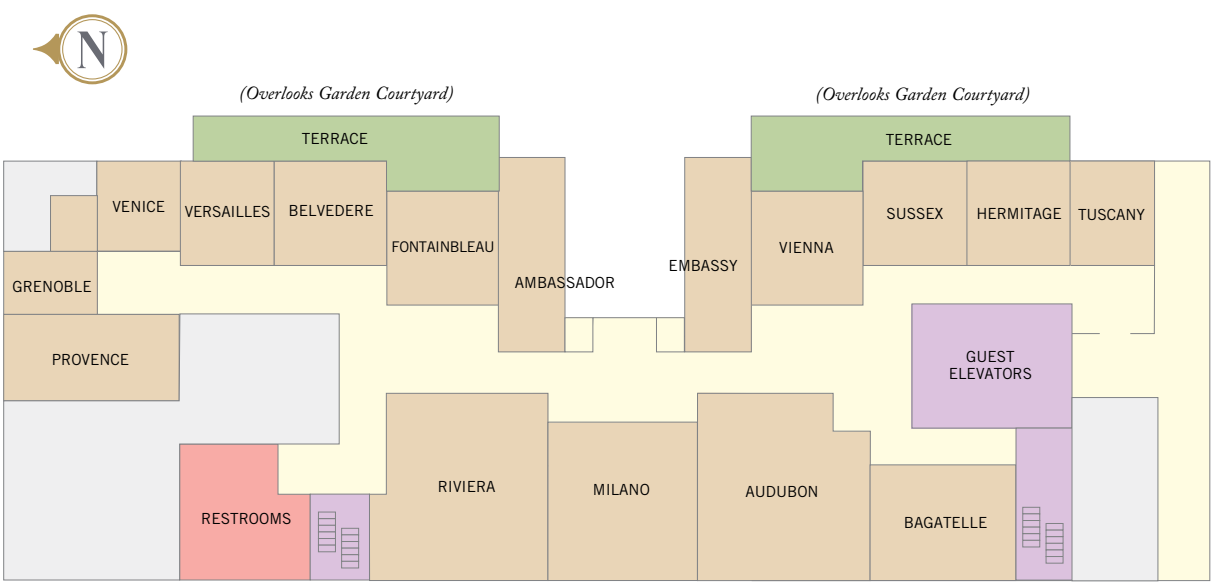
MEETING ROOMS

SPA

TERRACE & GARDENS

ELEVATORS & STAIRS

RESTROOMS



THIRD FLOOR

## THIRD FLOOR MEETING ROOMS

ROOM	DIMENSIONS	SQ. FEET	HEIGHT	BANQUET	THEATER	CLASSROOM	U-SHAPE
Grenoble	21.5 x 13.5	285	10.5'	30	16	12	12
Grenoble Side Room	13.75 x 11.75	163	10.5'	10	6	4	0
Venice	21.5 x 20.5	439	10.5'	40	32	24	21
Versailles	24.25 x 21	513	10.5'	40	32	24	21
Belvedere	24.25 x 20.5	497	10.5'	40	32	24	21
Fontainbleau	29.25 x 21.25	622	12.5'	60	44	32	28
Vienna	29.25 x 23.25	675	12.5'	60	44	32	28
Sussex	24 x 20.75	500	10.5'	40	32	24	21
Hermitage	24.5 x 21.25	512	10.5'	40	32	24	21
Tuscany	22 x 21.75	479	10.5'	40	32	24	21
Bagatelle	25.25 x 21	530	10.5'	40	32	24	21
Audubon	45 x 22.5	1011	12.75'	100	80	64	45
Milano	38 x 26.5	1010	10.25'	80	90	68	40
Riviera	45 x 22.5	1011	12.75'	100	80	64	45
Provence	31 x 21.5	668	10.5'	60	48	36	30
Embassy & Ambassador	26.58 x 14.25	379	10.5'	Boardroom/Conference with 16 people			



## TECHNICAL AMENITIES

Our complete and comprehensive in-house audio visual department provides state-of-the-art services and equipment for any size event. All meeting rooms have extensive telecommunication and audio visual backbone cabling systems, which allow for numerous telephone, data, video, and audio distribution via fiber optics, data rated twisted pair, and coax. The following reflect the Grand America's available meeting room technologies.

### Audio Visual

- Microphone and speaker systems
- Audio and video inputs
- Video and audio routing capabilities
- Music via house source, CD, DVD, & AM/FM
- Cable TV
- Computerized lighting controls with lighting
- Scene options
- Drop-down projectors and screens

### Ballroom Packages

- À la carte
- Projection equipment
- Electronic media equipment
- Computer support
- Telecommunication
- Screens
- Meeting accessories

### Presentation Packages

- LCD/computer display package
- Overhead projection
- 35mm slide package
- Monitor / VCR package
- Computer work station



## Spa Services

- Massages
- Body Treatments
- Facials
- Manicures/Pedicures
- Steam Room
- Dry Sauna
- Fitness Center
- Full Service Salon
- Swimming Pools
- Jacuzzi

## Shopping

- La Bonne Vie
- Jou Jou
- Ladies' Boutique
- Men's Haberdashery
- The Newsstand

## THE GRAND SPA

The newly renovated Grand Spa and Salon provides a full menu of salon services and spa treatments for event guests who want to look and feel their best. The 20,000-square-foot facility features a full-service salon, private treatment and therapy rooms, men's and women's locker rooms and changing rooms, steam and dry saunas, relaxation lounge areas, a fitness center and swimming pools.

## THE SHOPS AT THE GRAND

The Grand America offers a variety of unique and traditional retail shopping. La Bonne Vie invites you to enjoy French pastries and Italian gelato. The Men's Haberdashery and Ladies' Boutique feature designer labels and unique gifts. Jou Jou features unusual toys for children as well as classic games, books and vintage inspired candy.

## DINING

The Grand America Hotel offers a variety of world-class, award-winning culinary options. The hotel's highly talented team of chefs create fresh, seasonally inspired fare for sumptuous dining.

## FLEXIBLE CATERING SERVICES

The hotel's Executive Chef and his team expertly design memorable event menus, while the Executive Pastry Chef crafts custom cakes and desserts for weddings, anniversaries and other celebrations. Whether preparing an exclusive dinner, an upscale reception or an alfresco lunch, The Grand America Hotel's private dining and catering team delivers exceptional quality, striking presentation and impeccable service.

## Dining Options

- Garden Café
- Sunday Brunch
- Lobby Lounge
- Afternoon Tea
- Gibson Lounge
- In-Room Dining
- Poolside Dining

GRAND AMERICA  
HOTELS & RESORTS

THE WESTGATE HOTEL  
*westgatehotel.com*

LITTLE AMERICA CHEYENNE  
*cheyenne.littleamerica.com*

LITTLE AMERICA SALT LAKE  
*saltlake.littleamerica.com*

THE GRAND AMERICA HOTEL  
*grandamerica.com*

SNOWBASIN RESORT  
*snowbasin.com*

SUNLIGHT RANCH  
*sunlightranches.com*

SUN VALLEY RESORT  
*sunvalley.com*

LITTLE AMERICA FLAGSTAFF  
*flagstaff.littleamerica.com*

LITTLE AMERICA WYOMING  
*wyoming.littleamerica.com*