

Art Tour *at The* Grand

The Grand America Hotel is proud to be a showplace of museum-quality paintings, sculpture, and antiques. Guests enjoy an opportunity to view works of art carefully selected from prestigious international collections.

Hotel Wide Art

WHITE BETHEL GRANITE

Selected for its dazzling color, White Bethel granite is the whitest in the world. Large granite blocks were quarried in Vermont under the close supervision of Owner Earl Holding, then shipped to San Sebastian, Spain to be cut, honed, and polished. 450,000 square feet of marble was shipped to Utah via the Panama Canal, 85,000 of which is hand-set around the hotel's curved arches and detailed windows and doorways.

ANEGRE WOOD

Paneling in the lobby and corridors is Anegre, a unique West African wood. It was selected for its warm golden tone, lustrous sheen, and unusual grain.

PAINT SCHEMES

The hotel's detailed paint scheme employed 155 full time painters for nearly two years, detailing the woodwork.

Art In Guestrooms

All the white and grey veined marble in the guest baths is *Ciacatta Fabricatti*, one of the rarest and loveliest marbles in the world. Quarried in the Carrera region of Italy, Mr. Holding made many trips to ensure excellent quality.

American artist, *Joy Waldman*, painted artwork hanging in each guest room. Prints were made, then Waldman embellished and numbered each by hand.

Guest room furniture was made of *solid cherry wood* by hand in Richelieu, France. The marble tops on the guest room furniture are made from *St. Florient Rose marble*, quarried in Portugal.

The gorgeous fabrics in each guest room were woven in Italy on a custom basis for the Holding family by the *Spinelli Mill*.

LOBBY

LOBBY MARBLE

Gray and white Northern Italian marble known as "Fior de Pesco" was book-matched and end-matched on walls and floors, creating exquisite designs. The accent borders are created from "Fior De Pesco Carnico" and "Ross Antico" marble, personally selected by Mr. Holding on numerous trips to Italy to obtain the marble used in the hotel.

LES AMUSEMENTS CHAMPETRES —GAMES IN THE COUNTRYSIDE

Made at the Aubusson Royal Manufactory in 1760, this tapestry was fashioned after Jean-Baptiste-Oudry, a French Rococo painter, engraver, and tapestry designer. Woven in wool and silk, it was originally part of a collection including scenes of popular French games, although the game depicted has not been identified.

RETOUR DE CHASSE

The 18th century tapestry entitled "Return of Hunting" is located behind the concierge desk. Woven by Aubusson Royal Manufactory, it was part of a collection featuring popular French games.

SCONCES

Made by Tisserante, a Paris chandelier company which made many of the chandeliers for the Palace at Versailles. All are solid bronze, sand cast and hand worked.

BAROVIER & TOSSO CHANDELIERS

Made especially for the Grand America, each chandelier is crafted of hand-blown glass on the island of Murano near Venice, Italy. Barovier and Tosso have been in the chandelier business for 900 years. The Holding family met with Mr. Barovier, a descendant of the original founders, and together they designed the chandeliers on display throughout the Lobby, Murano and Venezia Garden Salons, and the Indoor Pool.

THE ACTRESS

This portrait of actress Helene Langeau de las Treille, by Henri Bouvet, presented in 1912 at the Salon of the French Society of Beaux Arts. Helene was a famous French actress who played for, among others, Sacha Guitry, a noted Parisian stage actor.

MOTHER & CHILD

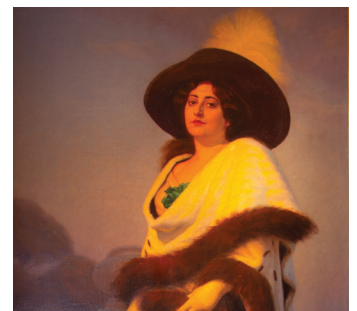
This original oil painting of Lady Gail Mott, wife of the co-founder of General Motors, with her son, Charles, was the centerpiece of the 1907 London Art Expedition. It was painted by John Grey, a contemporary of John Singer Sergeant.



*Les Amusements Champetres
– Games in the Countryside*



Retour de Chasse



The Actress

LOBBY LOUNGE

WATERMARKED MIRROR

The watermarked mirror displayed over the lobby bar is one of the many antique mirrors discovered in the attic of the Westgate Hotel in San Diego, California, when the property was purchased by the Holding family in 1976.

LOUIS XVI GOLD LEAF MIRROR & NAPOLEON III BOULE CLOCK

Napoleon Ball Clock

19th Century Louis XVI gold leaf mirror with a Center Beveled Glass, Acanthus Leaf Finials and turned side columns.

PAINTING LE THÉ — THE TEA

The painting by Henri Bouvet depicts the painter's family having tea. It hung for many years in the Bouvet home in France.

CHANSON GRISE

Literally translated as 'gray song', this oil on canvas by Henri Bouvet presented in Paris at the Salon of the French Society of Beaux Arts in 1906. Located in the lobby, it depicts the painter's family singing a popular song of the time.

AUBUSSON TAPESTRY: THE BOWLING GAME

Made in the Aubusson Royal Manufactory in the mid-18th century, this wool and silk tapestry depicts scenes of village life.

BOY & GIRL STROLLING

This cast bronze sculpture by artist Jon Davidson was made in Italy and acquired through the Vilda De Poro Gallery in Palm Beach, Florida. It is on display in the north lobby corridor.

MARBLE URNS

The unique pieces with rams-head handles and raised feet sit below the "Early Sailing Vessels" art collection.

EARLY SAILING VESSELS

There are eight antique hand-colored engravings from Paris, heightened with gilt (the process of applying gold leaf). The paintings depict sailing vessels, circa 1690.

ANTIQUÉ FRENCH DESK

Antique French desk with bronze ormolu trim and an inset leather top. Ormolu is an 18th century English term for applying finely ground, high-karat gold to an object in bronze.

LE JOUERUR DE CORNEMUSE

The Bagpipe Player

Mid 18th century Brussels tapestry. After the Flemish painter David Teniers the Younger (1610-1690). Very finely woven in wool and silk. Hangs above an antique Wood Chiffonier.

ANTIQUÉ WOOD CHIFFONIER

This cabinet was acquired in Vienna, Austria by the Holding family. Crafted from nut tree root and inlay, as well as fruitwood veneer and maple furnier, it dates back to 1750 and the old Bavarian city of Regensburg, a cultural center of the 18th century. A Chinese porcelain vase graces its top, and no information about its origin is available.

MOSCATELLI CHANDELIERS

Made of solid bronze and designed by the Moscatelli family of Milan, Italy, they are sand cast and of a design unique to the hotel. They can be found in the Grand Salon.

GIBSON LOUNGE

Adorning the walls of the hotel's Gibson Lounge are portraits named for Irene Gibson, 1873-1956. Ms. Gibson set the fashion trend for the ideal American woman at the turn of the century. Originally from Richmond, she was the ultimate southern belle, witty, charming, beautiful and delightful in every way. While in New York for debutante balls and teas, she met the handsome and popular young artist, Charles Dana Gibson. They quickly became America's favorite couple and were wed on November 7th, 1895. She became the model for several of her husband's drawings.

"TAPISSERIE DANS LE GOUT DE PILLEMENT" —TAPESTRY IN THE GOUT OF PILLEMENT

This beautiful tapestry was acquired from a private collector in Normandy and is from the era of Louis XV (1715-1774). It is a tapestry which represents an imaginary landscape with exotic birds and pagodas in luxurious and abundant vegetation. Signature is of Mr. F. Aubusson.

"GIRL WITH BUTTERFLY"

This Italian piece, depicting a young girl at play, was acquired from the Vilda De Poro Gallery in Florida.

ITALIAN GOLD LEAF TABLE

An ornate gold leafed Italian credenza with eight legs, ogre edges and green marble top.

BRONZE URNS

At the entrance to the Imperial Ballroom and in the center courtyard stand pairs of Italian bronze urns.

BAROVIER AND TOSCO CHANDELIERS

Moscatelli, Barovier and Tosco all contributed to the lighting design and bronze and crystal chandeliers on this floor. Designed by Mr. Barovier together with the Holding family.

CORRIDOR ART

Although little is known about each piece individually, the corridor includes Crystal Palace Lithographs, a set of unique hand-colored copper engraving entitled "Ten Views of Versailles" by Nicolas De Poilly, "The Garden of England" a set of color-printed lithographs from 1857 London by E. A. Brooke and a set of 1842 hand-color lithographs of the interiors and exteriors of Venice by Lake Price.

AUDUBON LITHOGRAPHS

Some of the most beautiful John James Audubon (1785-1851) lithographs ever collected hang in the north foyer on the Third Floor. Each was drawn from nature with intimate detail and artistic precision. These prints include the Snowy Owl, Great Horned Owl, Spotted Grouse and Virginia Partridge.



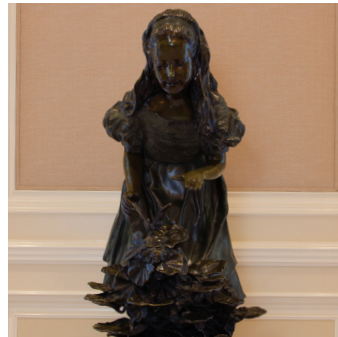
Mother & Child



Boy & Girl Strolling



Gibson Girl Paintings



Girl with Butterfly



Louis XVI Gold Leaf Mirror & Napoleon III Boule Clock



Antique French Desk



The Bagpipe Player



Italian Gold Leaf Table



Painting Le The —The Tea



Antique Wood Chiffonier



Audubon Lithographs



The Bowling Game



Moscatelli Chandeliers

The
GRAND
AMERICA
Hotel

555 South Main Street
Salt Lake City, UT 84111

GRANDAMERICA.COM